




Simplify 설치 매뉴얼

Step 1



SIMPLIFY3D

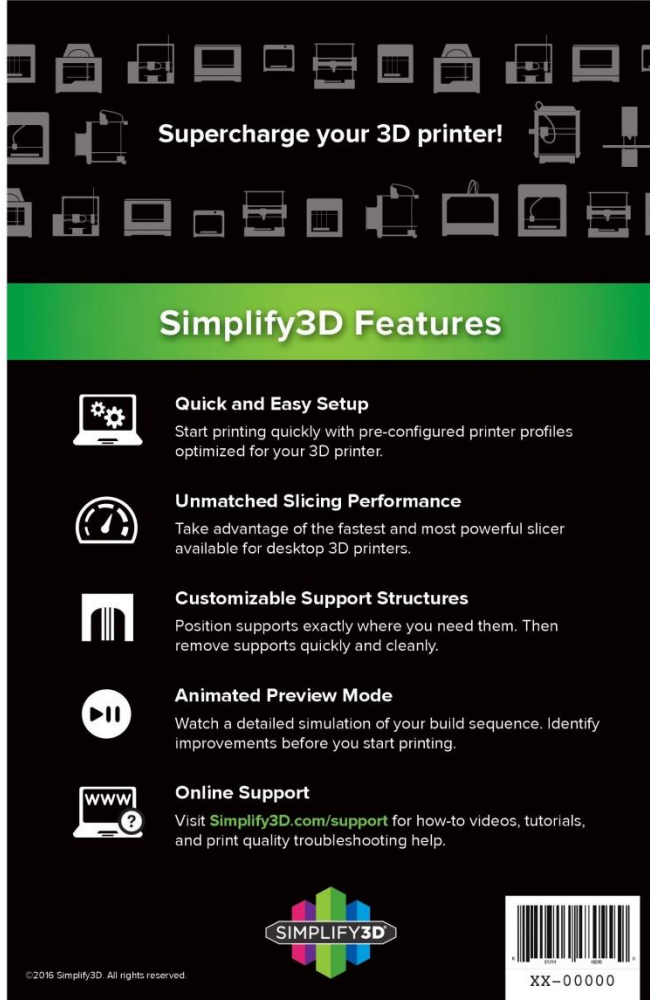
SOFTWARE REDEMPTION CARD

TO REDEEM YOUR SIMPLIFY3D SOFTWARE:

1. Scratch off silver label
2. Go to [Simplify3D.com/redeem](https://www.simplify3d.com/redeem) and enter code
3. Follow instructions to create account and download software

REDEMPTION CODE

©2016 Simplify3D. All rights reserved.



Supercharge your 3D printer!

Simplify3D Features

- Quick and Easy Setup**
Start printing quickly with pre-configured printer profiles optimized for your 3D printer.
- Unmatched Slicing Performance**
Take advantage of the fastest and most powerful slicer available for desktop 3D printers.
- Customizable Support Structures**
Position supports exactly where you need them. Then remove supports quickly and cleanly.
- Animated Preview Mode**
Watch a detailed simulation of your build sequence. Identify improvements before you start printing.
- Online Support**
Visit [Simplify3D.com/support](https://www.simplify3d.com/support) for how-to videos, tutorials, and print quality troubleshooting help.

SIMPLIFY3D

XX-00000

©2016 Simplify3D. All rights reserved.

- 제품 박스 내 동봉되어 있는 Simplify3D 책자에서 회색 스크래치를 지워 30자리 코드 확인

Step2

Your Name (required)

Email (required)

Email Confirmation

Redemption Code (required)

Redeem Code!

- www.simplify3d.com/redeem 접속
- 위부터 차례로 이름, 메일 주소(2회 입력), 책자 내 코드 입력 후 Redeem Code 버튼 클릭

Step3

From: no-reply@simplify3d.com

Subject: Your Simplify3D Software Purchase

Date:

To:

SIMPLIFY3D®

Your Simplify3D Software Purchase

Order #

Thank you for purchasing a license to the Simplify3D Software!

As part of your purchase, we have automatically created a Simplify3D account for you. This account will be your gateway for accessing and using the software.

Please click the link below to verify your account and to begin downloading the Simplify3D Software.

[Verify Account](#)

- 입력한 메일 주소로 발송된 Simplify3D Purchase 메일 확인(미발송 시 스팸함 확인)
- 주문 번호(Order #) 확인 후 하단의 녹색 버튼 클릭하여 계정 생성

Step4

Finalize Your Simplify3D Account

Welcome to your new Simplify3D Account! Please create a username and password for this account so that you can access it in the future.

You will use this same username and password combination when installing the desktop software.

Username

Password

Confirm Password

Finalize Account

- 계정 로그인 시 사용하고자 할 ID(Username)와 Password(2회 입력)를 입력
- 입력 후 Finalize Account를 클릭. 이 때 패스워드는 8글자 이상으로 입력해야 함

Step5



jslee

Dashboard

Account Settings

Download

Devices

Logout

Download Options

This page allows you to download the installer for the Simplify3D desktop software. After installing the software, you will be asked for your username and password so that the software can be linked to your Simplify3D account.

Operating System

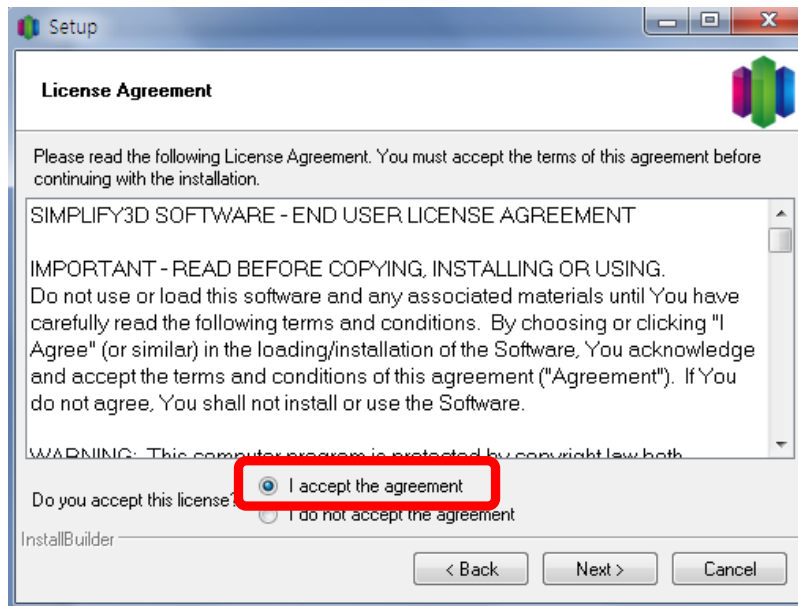
Windows 64-bit

Download Software Installer

Windows Installation Instructions

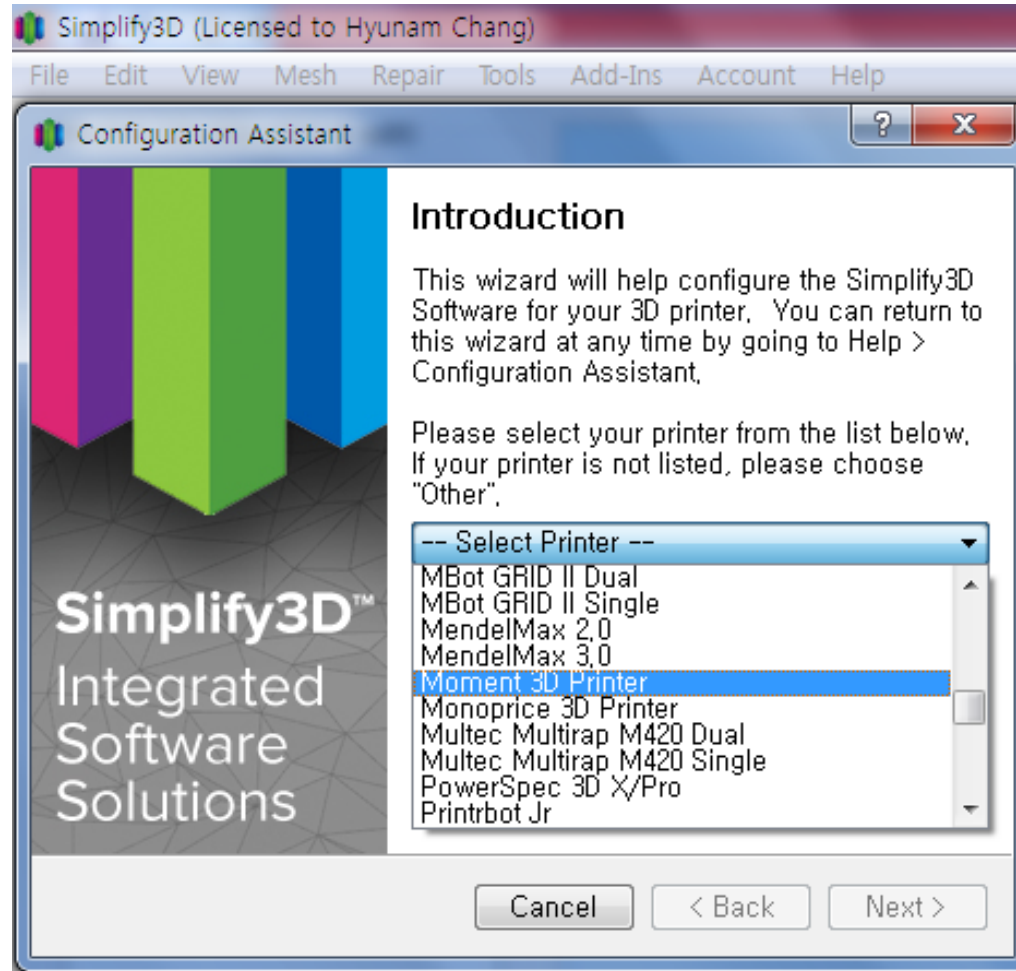
- Unzip the .zip file and double-click the .exe file to install.
- **Note:** You may need to right-click and choose "Run as administrator" depending on your security settings.

- 이후 계정 화면 왼쪽 메뉴에서 Download 클릭, 윈도우 버전 선택 후 다운로드 진행



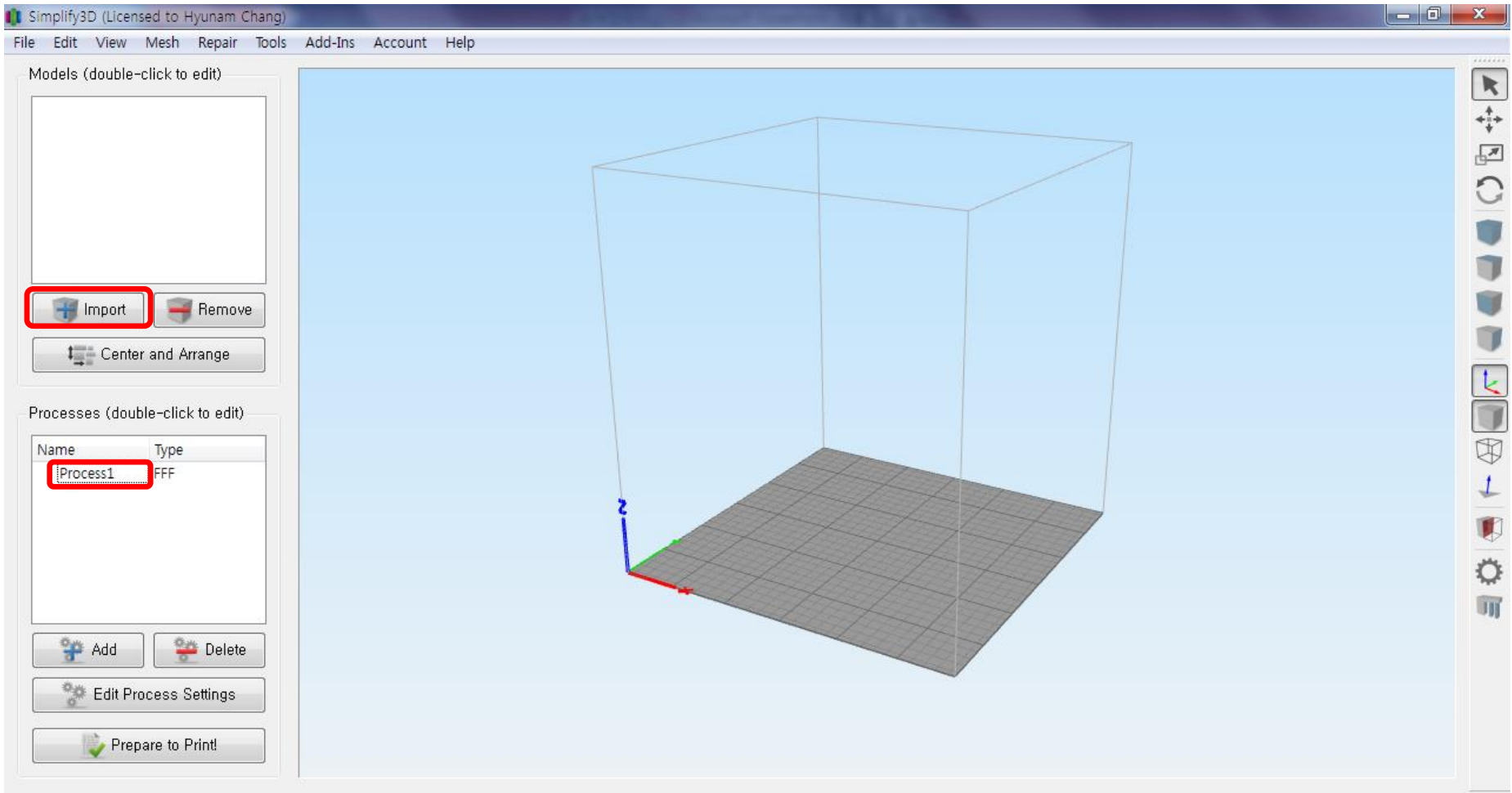
- 설치파일 다운 후 실행, 동의 체크 후 진행. 설치 완료 후 생성한 계정의 ID/PW 입력

Step 6



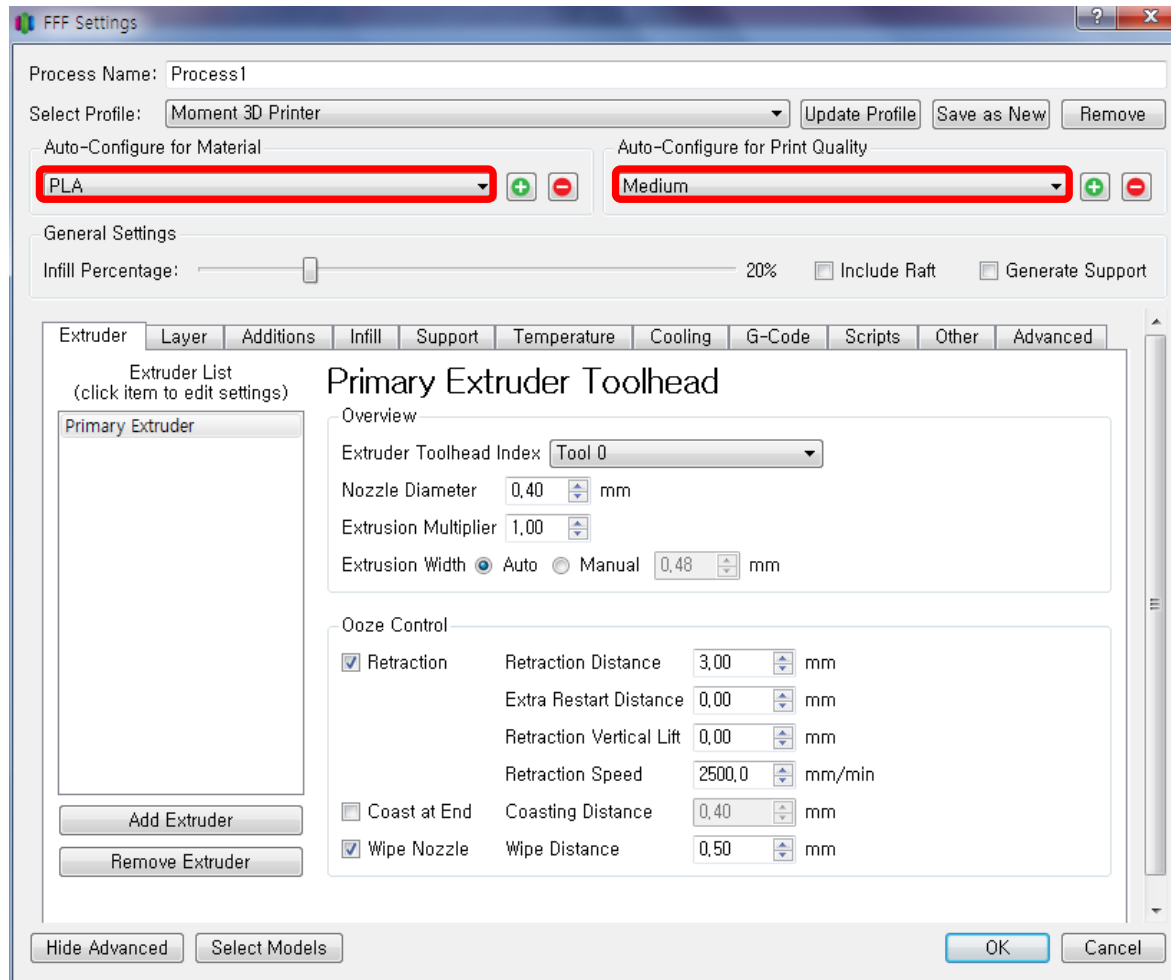
- 메인 메뉴 중 Help > Configuration Assistant 클릭하여 원하는 제품 선택
- 특정 제품이 없을 경우 가장 아래 Other 클릭 후 셋팅 값 직접 설정 가능

Step7



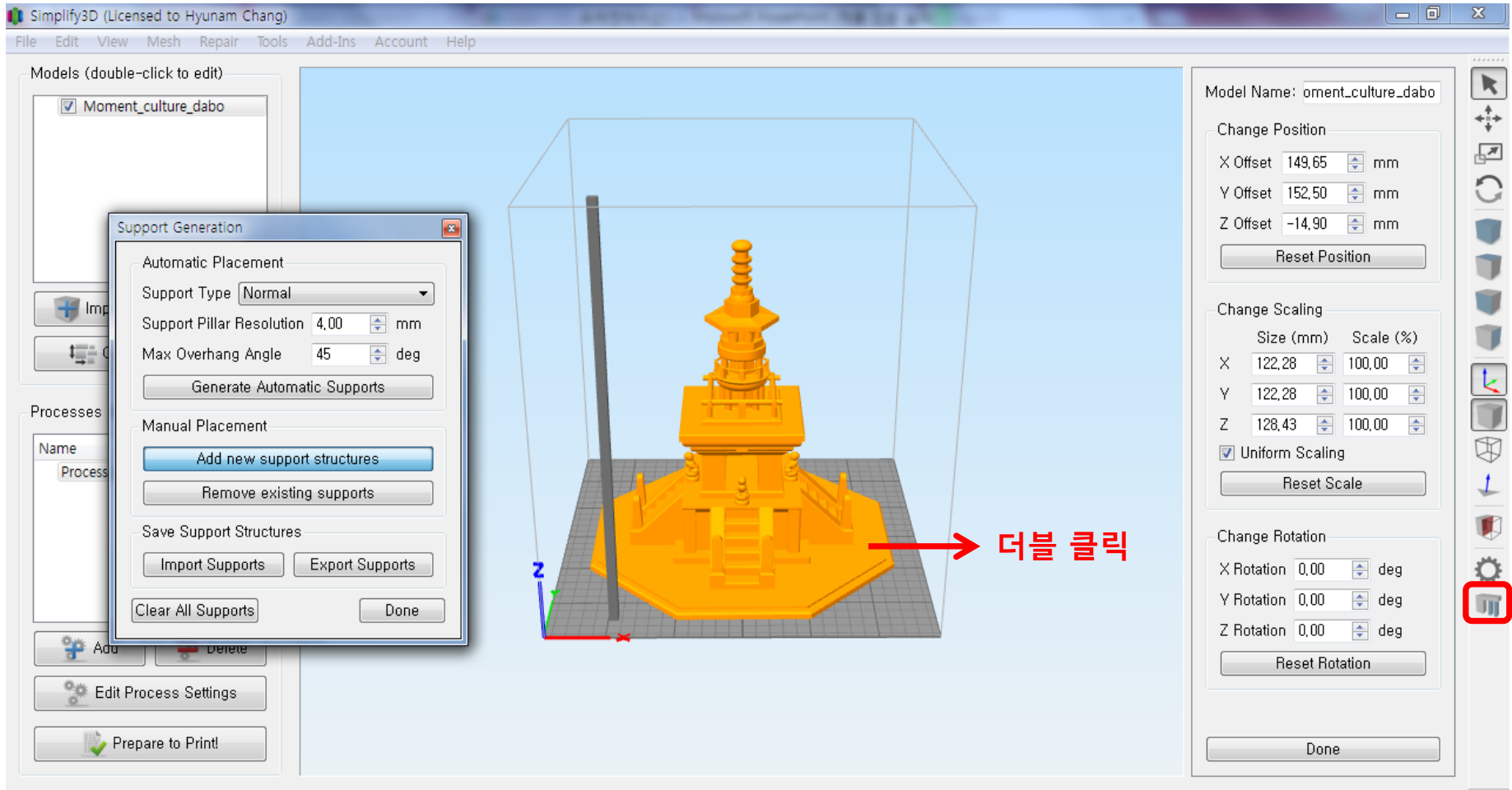
- 왼쪽 상단 Import 클릭하여 슬라이싱 할 stl 파일을 불러올 수 있음
- 왼쪽 하단 창에서 Process1 을 더블 클릭하여 설정 값을 확인 • 수정 할 수 있음

Step8



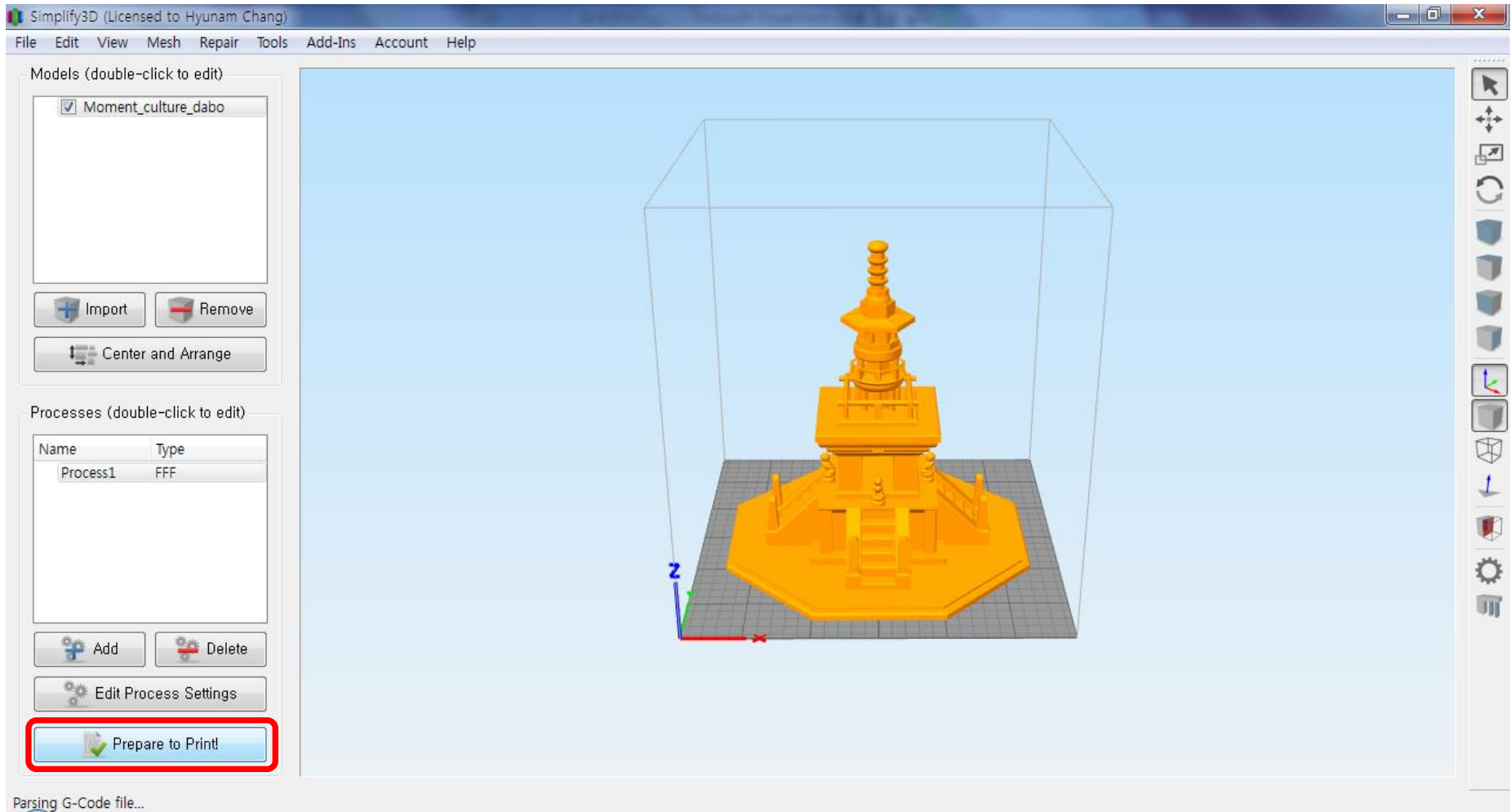
- 설정 창 내에서 필라멘트 종류, 출력 퀄리티를 설정할 수 있음
- PLA: Fast(0.3mm, 120mm/sec), Medium(0.2mm, 80mm/sec), High(0.1mm, 60mm/sec)
- ABS: Fast(0.3mm, 70mm/sec), Medium(0.2mm, 60mm/sec), High(0.1mm, 50mm/sec)

Step9



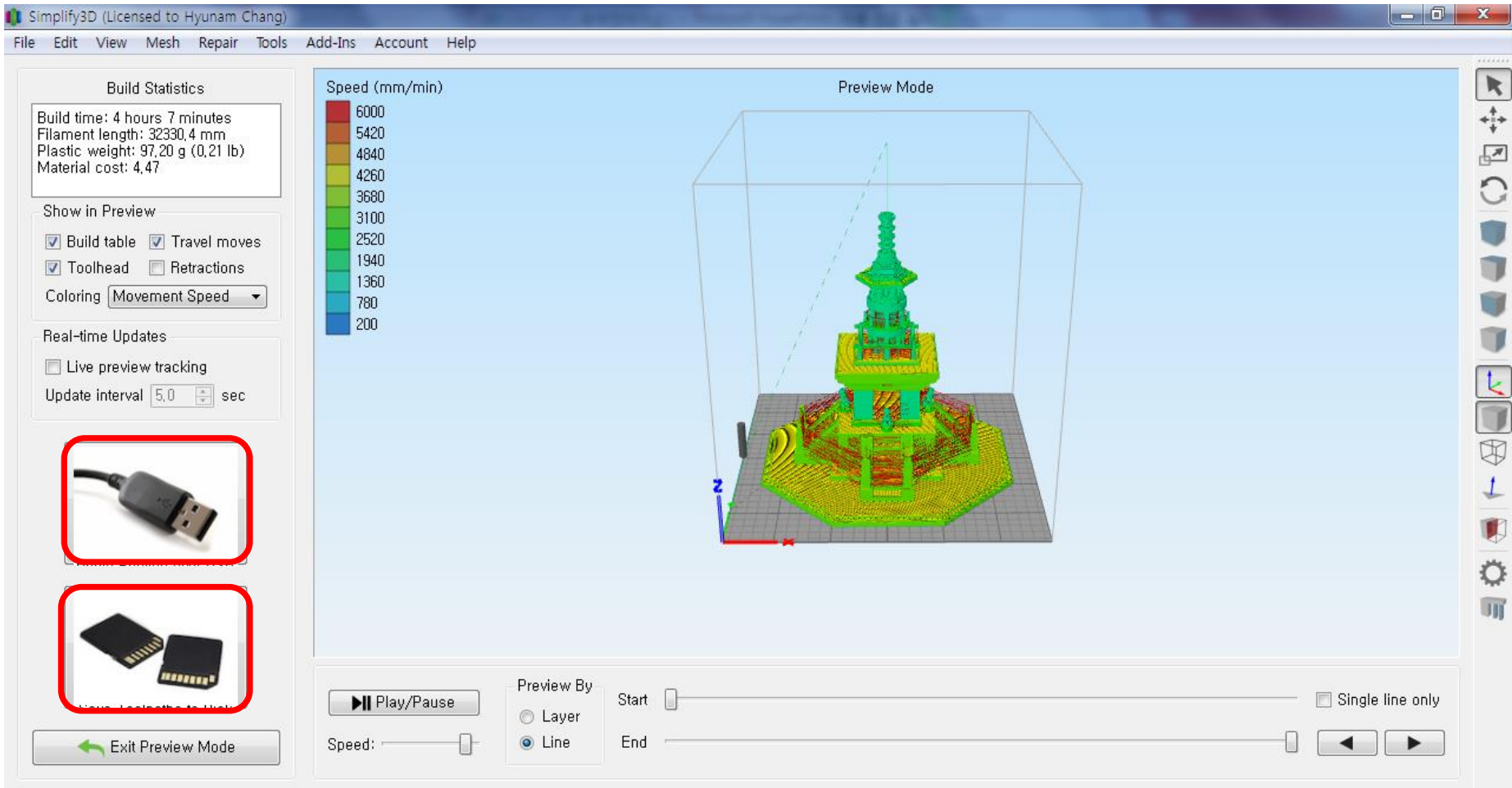
- 불러온 모델링 파일을 더블 클릭하여 크기, 각도, 위치 등을 조정할 수 있음
- 수동 서포트 생성 시 오른쪽 메뉴 중 Customize Support Structures 클릭

Step10



- 설정 완료 후 왼쪽 하단의 Prepare to Print! 버튼 클릭하여 슬라이싱 변환

Step 11



- 변환 완료 후 왼쪽 하단의 Save toolpaths to Disk 클릭하여 SD카드 저장
- USB 프린팅의 경우, 프린터와 컴퓨터 연결 후 Begin Printing over USB 클릭
(사용할 컴퓨터에 Arduino 드라이버가 설치되어 있어야 함. www.arduino.cc/en/Main/Software에서 다운 가능)

계정 관리



haloveher

Dashboard

Account Settings

Download

Devices

Logout

Linked Devices

This page allows you to see which devices have been successfully linked to your Simplify3D account. If you ever need to move your license to a new device, you can do that by uninstalling the software from the old computer and selecting "Yes" when asked if you would like to remove your license from that machine.

In extreme circumstances such as a hard drive failure or a stolen computer, the "Reset Device" button can be used to forcefully unlink a specific device. **Only use this option in extreme circumstances!**

Device 1

Install Date: 2015-05-19 20:45:08

Operating System: Windows

Reset Device

Device 2

Install Date: 2015-06-18 22:43:45

Operating System: Windows

Reset Device

- www.simplify3d.com/account에 접속, 로그인하여 사용중인 계정을 관리
- Account 로그인 후 Devices 를 클릭하면 현재 설치된 기기 정보를 확인할 수 있음
- Reset Device: 프로그램 비활성화를 하지 않고 프로그램을 삭제하거나 컴퓨터를 포맷했을 때, 해당 버튼을 클릭해 등록된 컴퓨터 정보를 초기화할 수 있음
- Account Settings 에서는 사용자 정보 입력, Email 주소 및 PW 변경을 할 수 있음